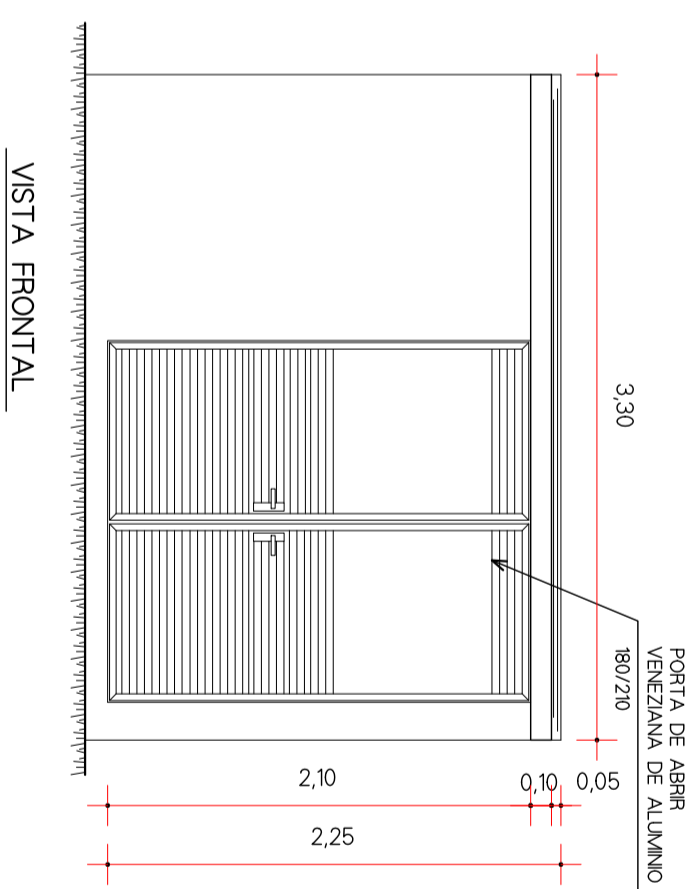
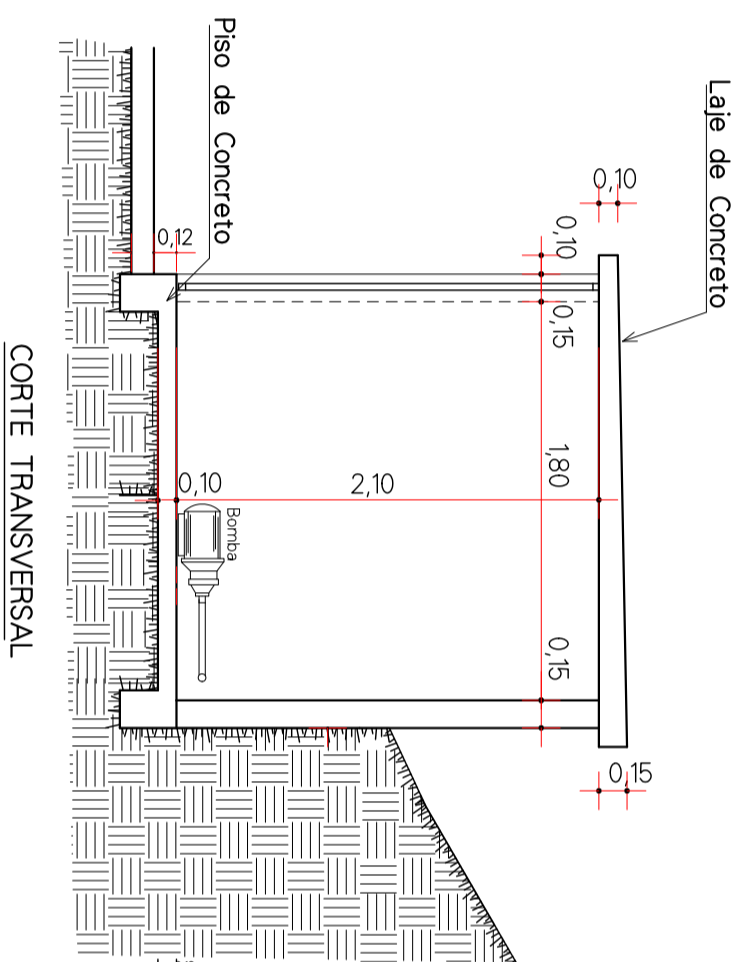
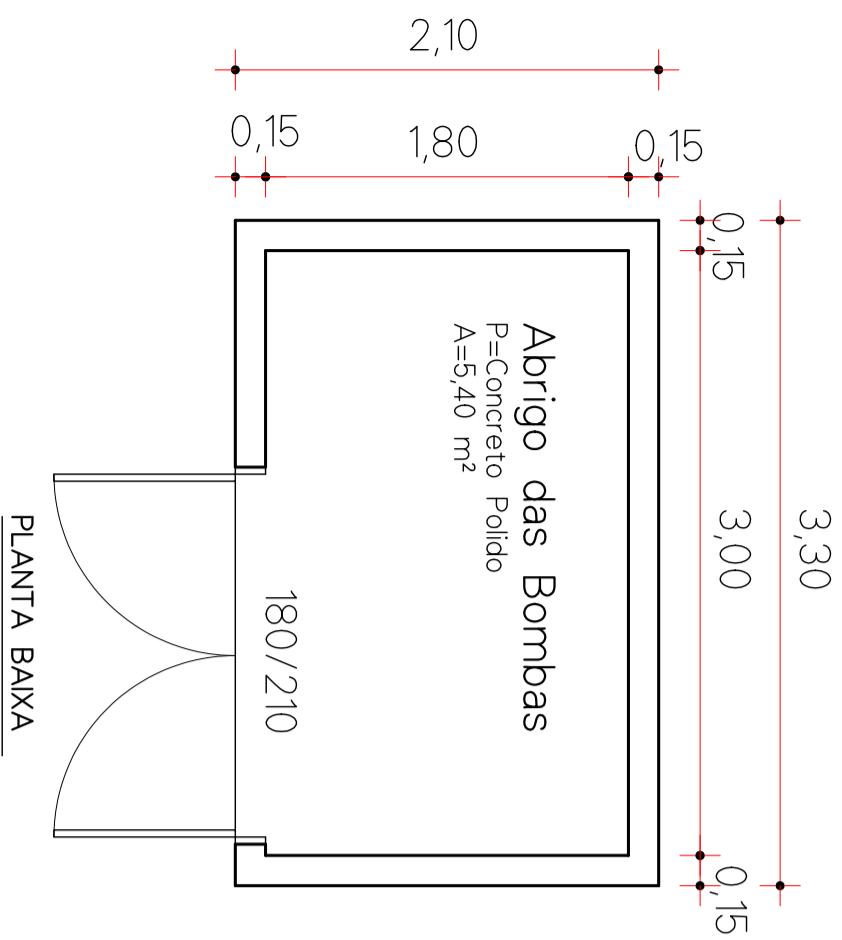
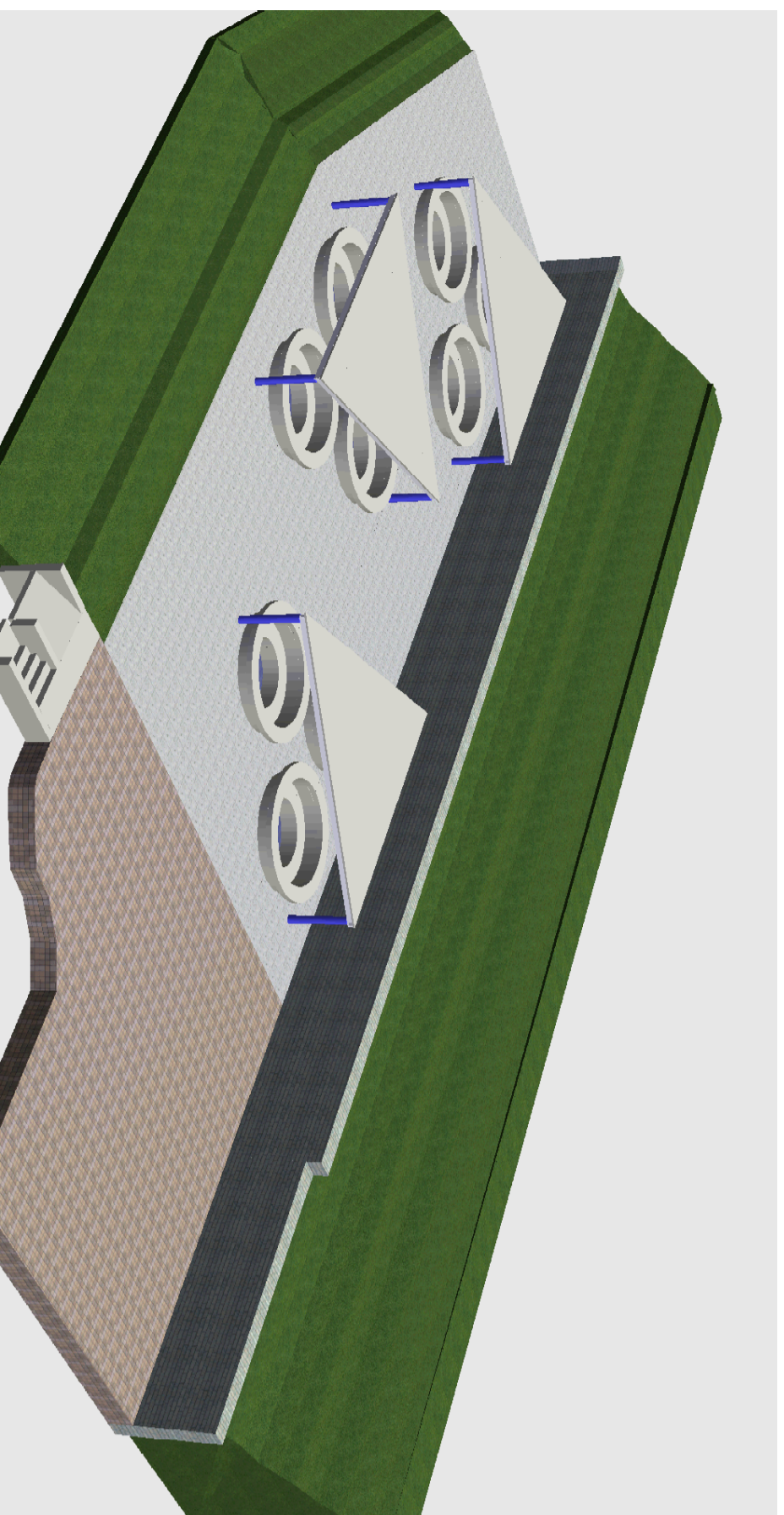
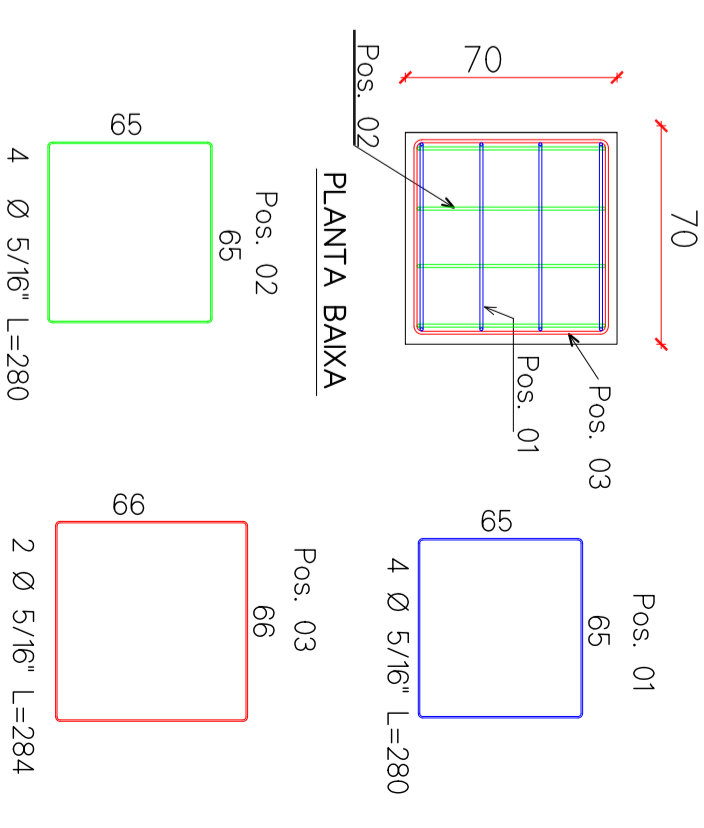


DETALHE ABRIGO DE BOMBAS

Esc.: 1/40

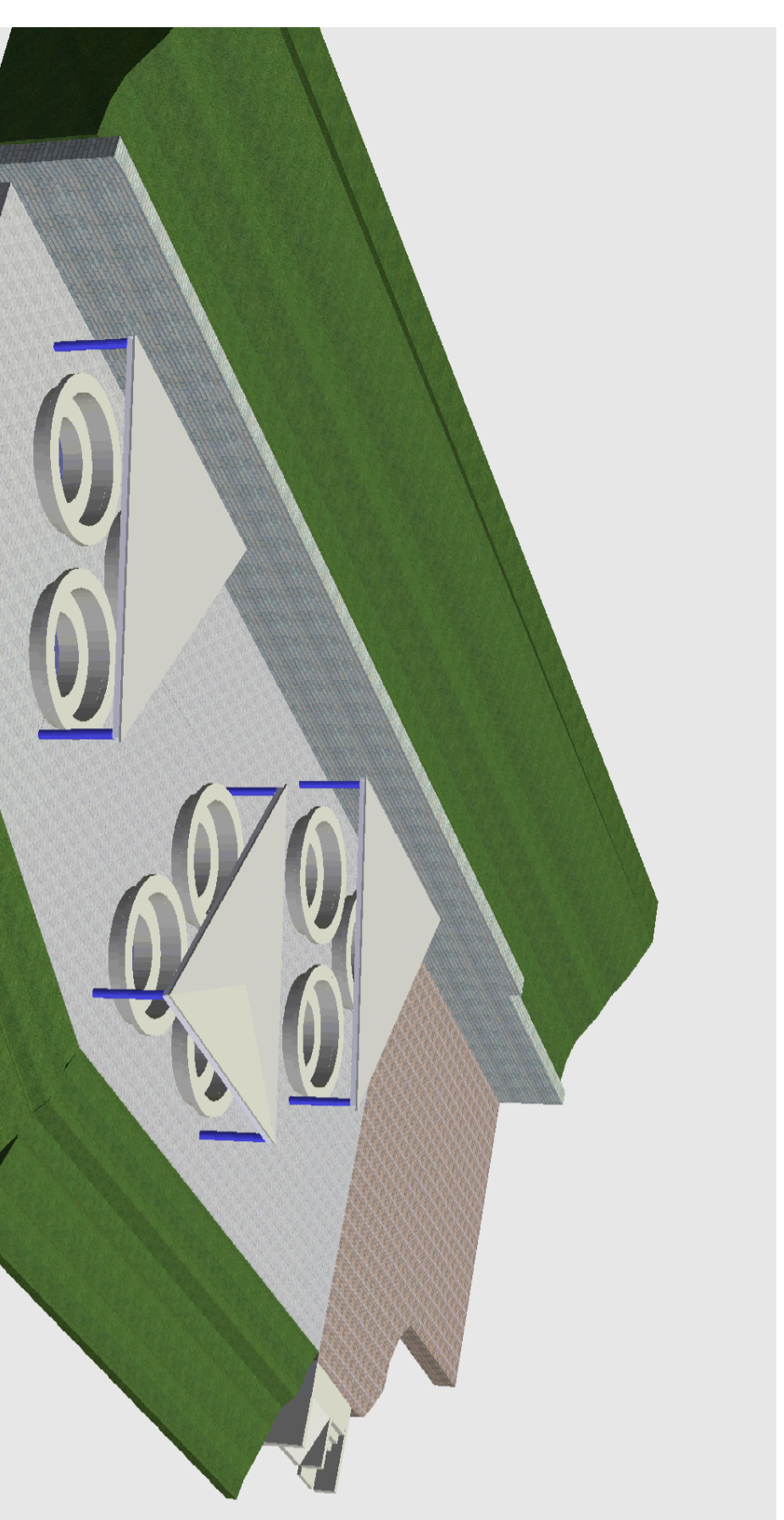


BLOCOS (70x70xh=70), APOIO DAS COBERTURAS DAS PISCINAS



VISTAS 3D COBERTURA PISCINAS

Esc.: 5/Esc

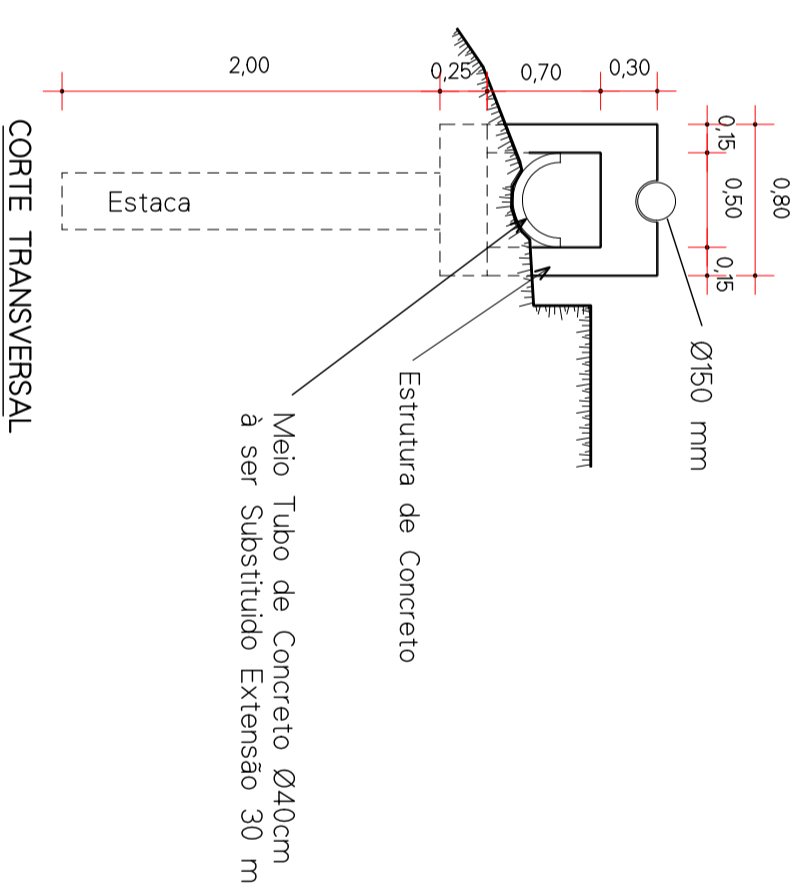


VISTAS 3D COBERTURA PISCINAS

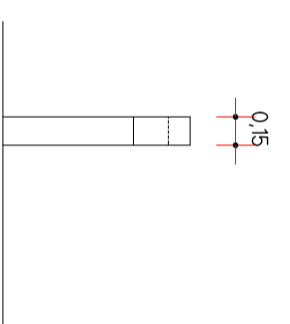
Esc.: 5/Esc

EXECUÇÃO DE 07 CONJUNTOS DE APOIO DA CANALIZAÇÃO DE ÁGUA TERMAL Ø 20cm EM CONCRETO ARMADO

Esc.: 1/40



CORTE TRANSVERSAL



VISTA LATERAL

**BRUSCHI**

BRUSCHI ENGENHARIA LTDA. RESPONSÁVEL TÉCNICO:

Rua Itararé, 30 - Sala 01 - Erechim/RS  
Fone/Fax: (54) 2106-8500  
e-mail: bruschiengenharia@gmail.com

PROJETO ARQUITETÔNICO

**OBRA:** PISCINAS DE HIDROMASSAGEM  
DETALHE CASA DE BOMBAS, SUPORTE DA CANALIZAÇÃO DE ÁGUA TERMAL E VISTAS 3D

**LOCAL:** AV. BEIRA RIO Nº 4001, BAIRRO BALNEÁRIO,  
MUNICÍPIO DE MARCELINO RAMOS

**PROP:** COMPANHIA ÁGUAS TERMAS DE MARCELINO RAMOS - TERMASA

**ENGENHARIA**

DATA: ABRIL/2024

ESCALA: 1/50

PRANCHA: 03/03

DESENHISTA: JORGE